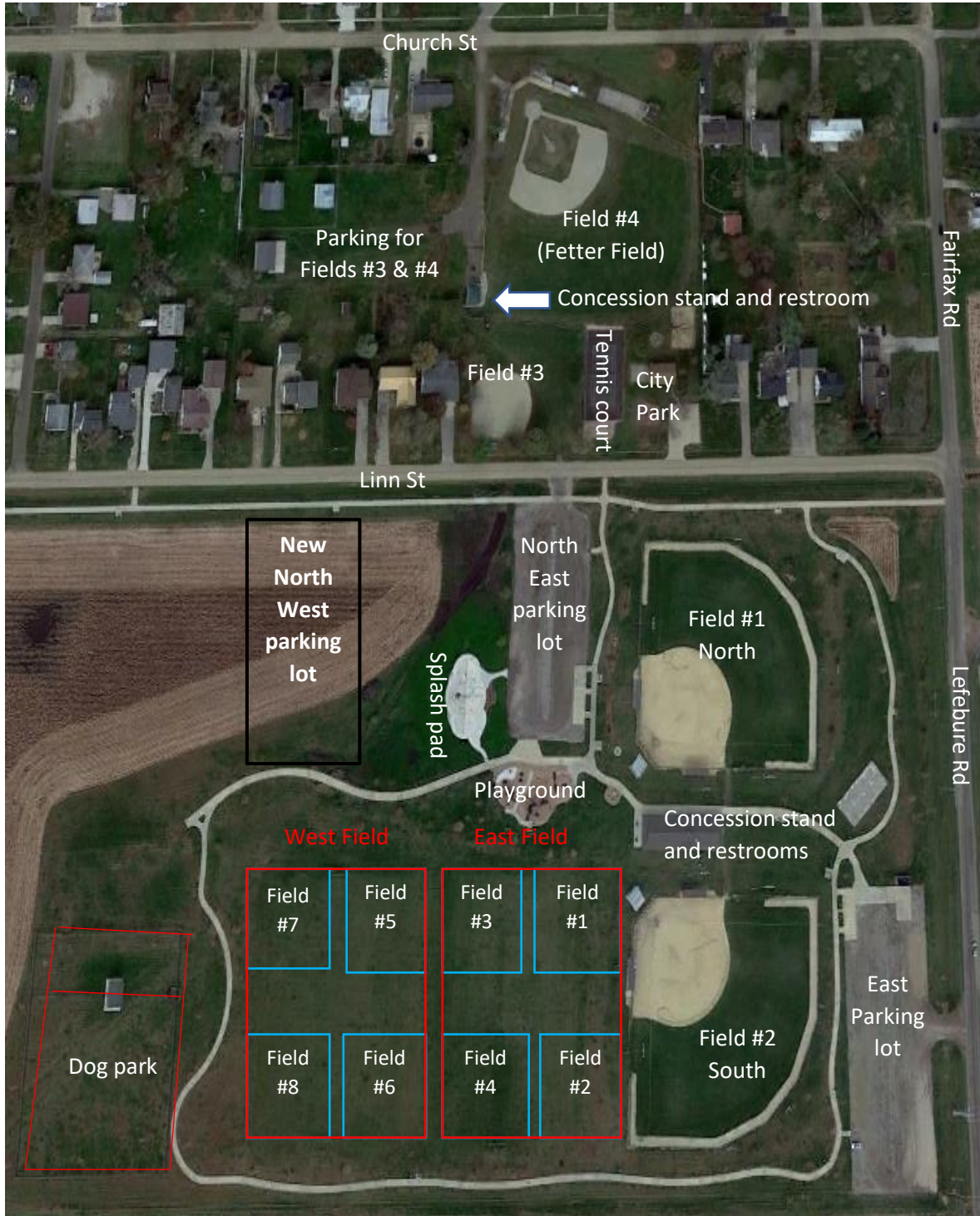


Fairfax Regional Sports and Park Complex

Athletic Fields Map



* Please remember there are two parking lots on the North side of the Complex and one on the East side. There is no parking allowed on Linn Street or Fairfax Road.

* **Watch out for those kids!** The Complex is very busy and kids are running everywhere. They are not looking out for you so **PLEASE** look out for them.

* If games are canceled due to weather there will be an announcement on the FYS weather line one hour prior to game time. The weather line is (319) 846-1699.

* The Complex, Fetter Field and City Park are surrounded by residential homes. Please be respectful of private property.

* If you need anything or have any questions, please go to the concession stand. The staff in there can direct you to anything!

*Big soccer fields in red *Pee wee soccer fields in blue

Comments or questions? Please contact: Joe Kell – City of Fairfax Parks & Recreation Director

jkell@cityoffairfax.org or (319) 270-1919